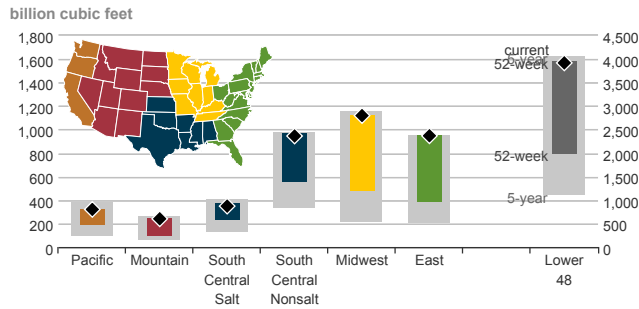
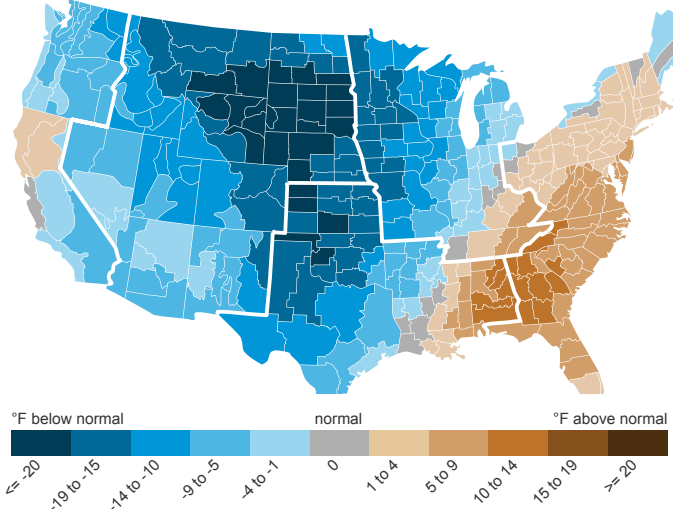


Lower 48 working gas in underground storage as of October 30, 2020: 3,919 Bcf | Weekly net change: ▼ 36 Bcf

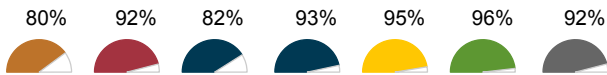
### Underground working natural gas storage summary as of October 30, 2020



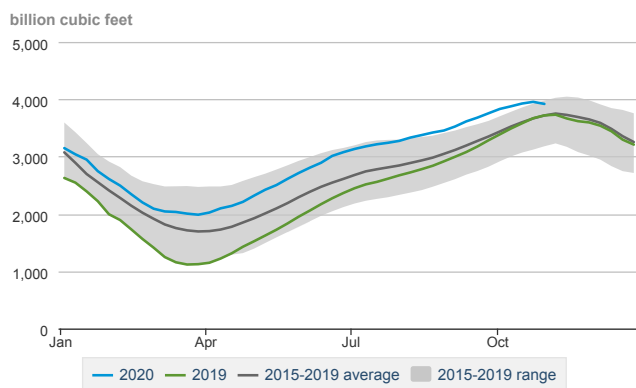
### Weekly average departure from normal temperatures as of October 29, 2020



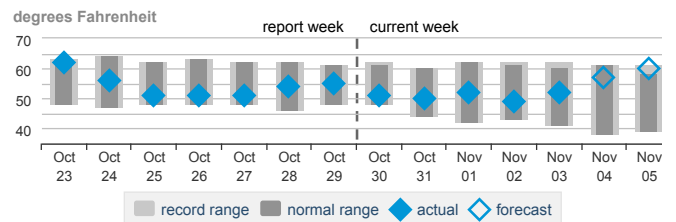
### Underground storage capacity utilization



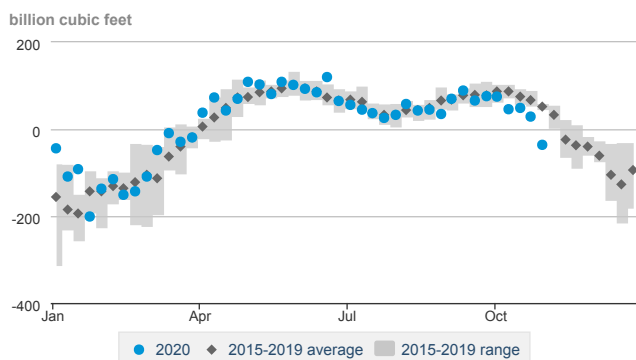
### Lower 48 weekly working gas in underground storage



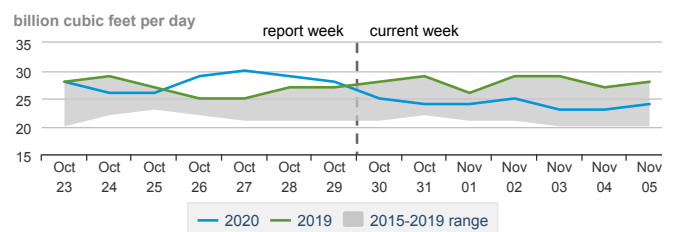
### Daily Lower 48 average temperatures



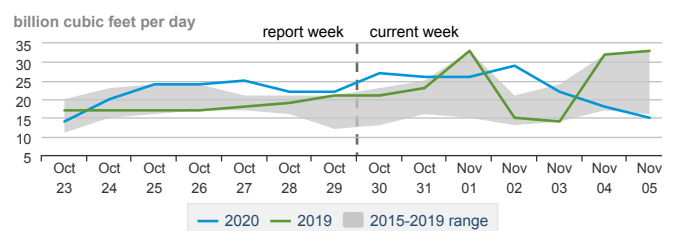
### Lower 48 weekly net change in working gas in underground storage



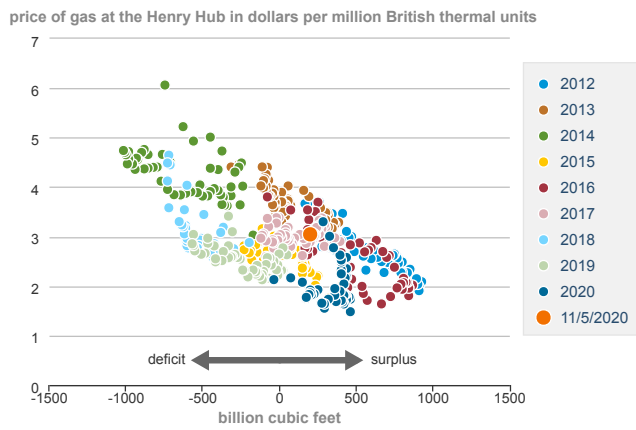
### Daily Lower 48 natural gas consumption for electricity generation



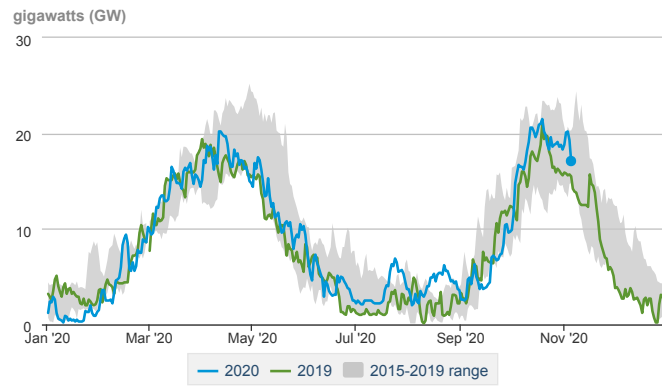
### Daily Lower 48 natural gas consumption for residential/commercial use



### Lower 48 weekly working gas stocks, minus five-year average, and near-month futures prices

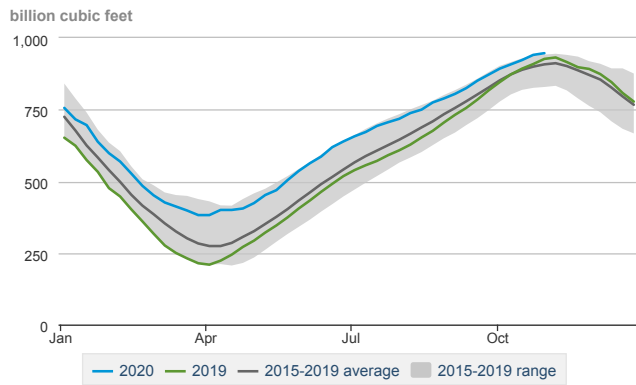


### Daily U.S. nuclear outages

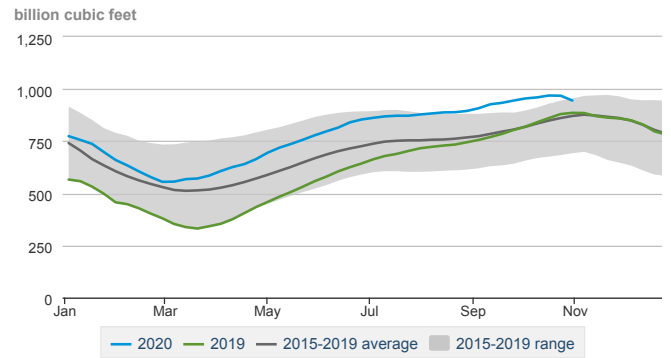


## Regional Natural Gas Storage Stocks

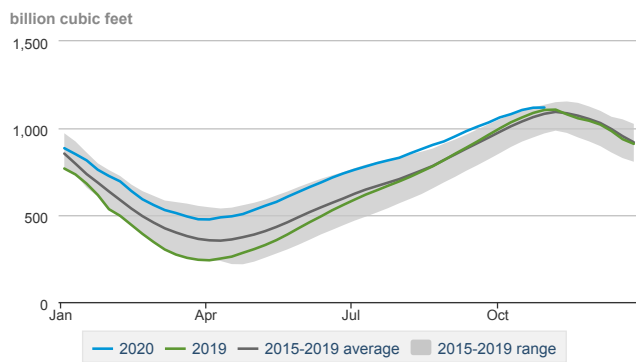
### East region weekly working gas in underground storage



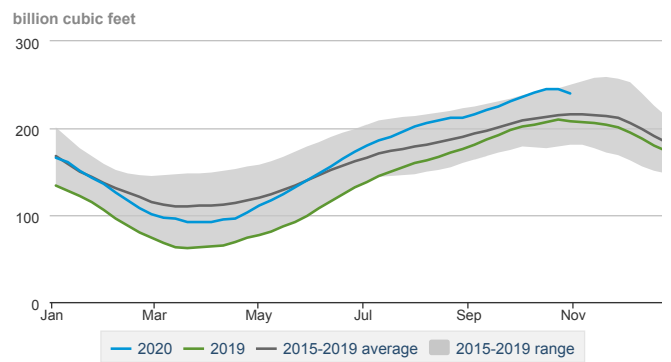
### South Central Nonsalt region weekly working gas in underground storage



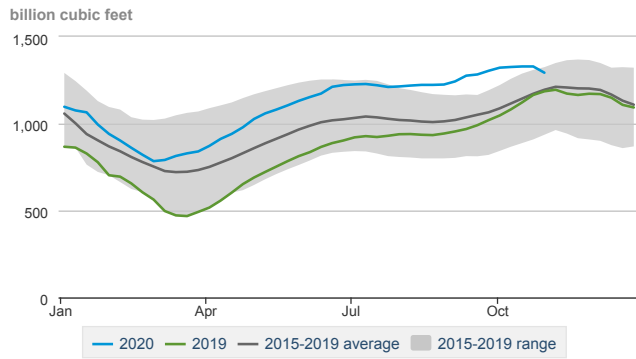
### Midwest region weekly working gas in underground storage



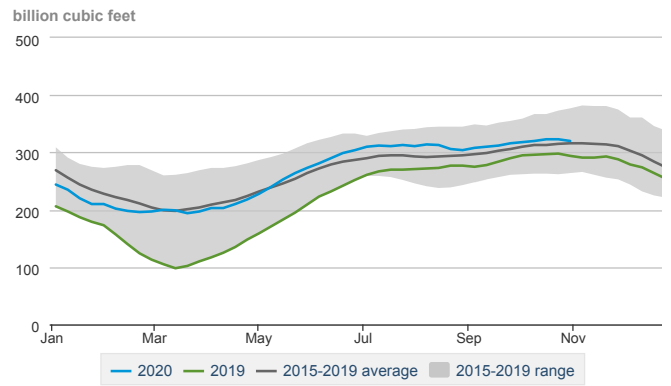
### Mountain region weekly working gas in underground storage



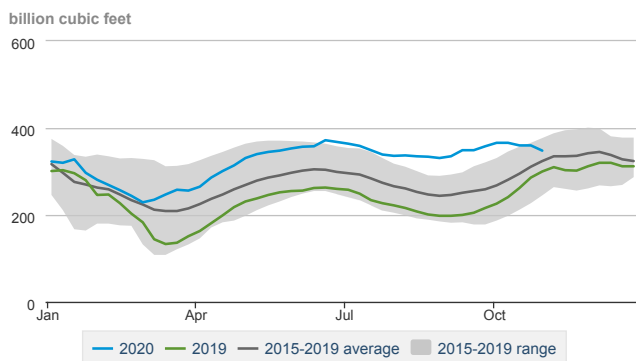
### South Central region weekly working gas in underground storage



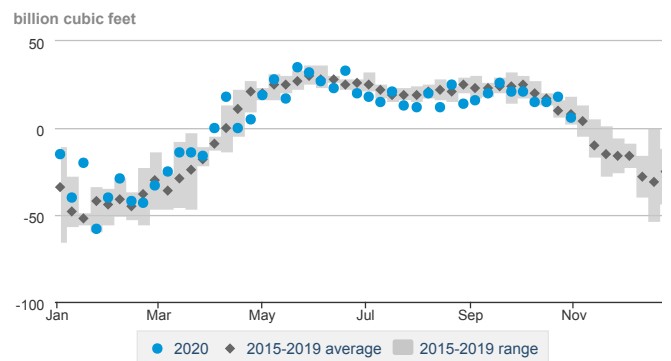
### Pacific region weekly working gas in underground storage



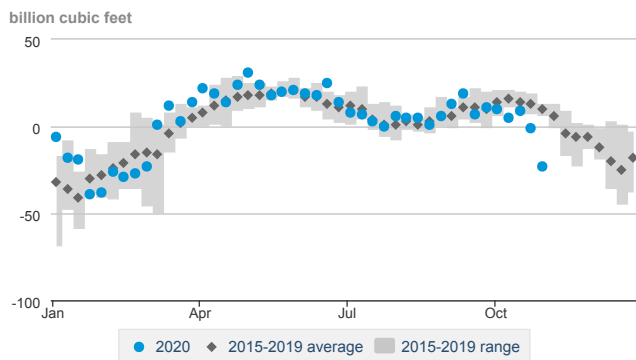
### South Central Salt region weekly working gas in underground storage



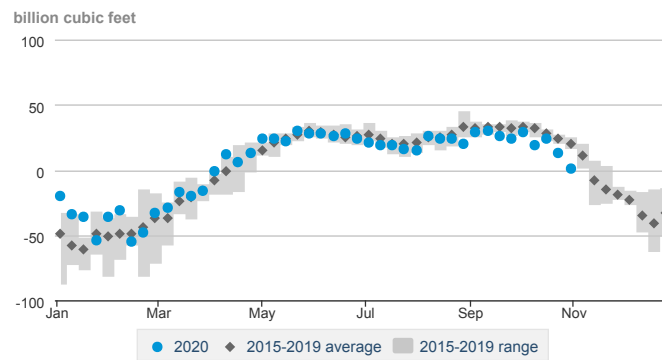
### East region weekly net change in working gas in underground storage



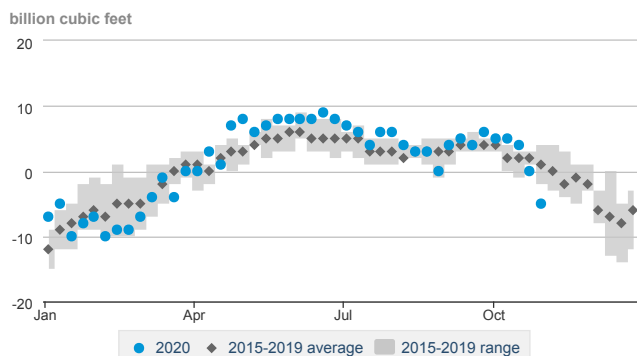
### South Central Nonsalt region weekly net change in working gas in underground storage



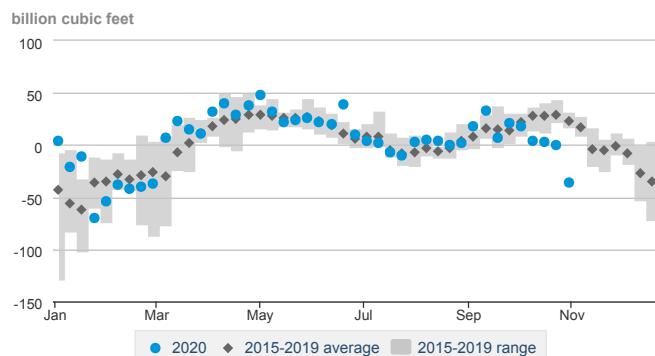
### Midwest region weekly net change in working gas in underground storage



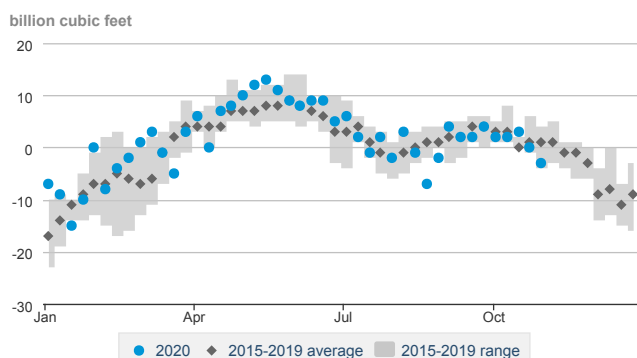
### Mountain region weekly net change in working gas in underground storage



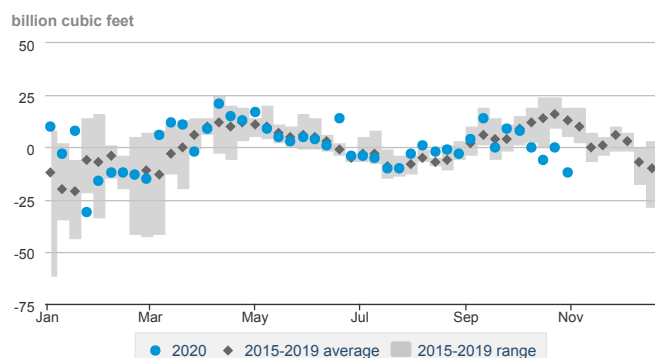
### South Central region weekly net change in working gas in underground storage



### Pacific region weekly net change in working gas in underground storage



### South Central Salt region weekly net change in working gas in underground storage



## Prices and Other Indicators

### Daily regional average temperatures and departure from normal

degrees Fahrenheit

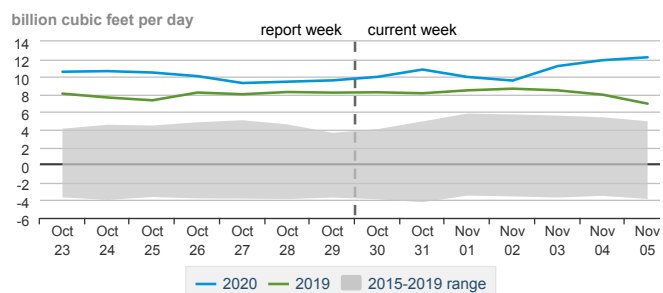
	Oct 23	Oct 24	Oct 25	Oct 26	Oct 27	Oct 28	Oct 29	Oct 30	Oct 31	Nov 01	Nov 02	Nov 03	Nov 04	Nov 05
East	67	64	55	56	59	59	59	51	47	51	45	48	52	58
Midwest	56	41	41	40	39	44	44	40	44	41	39	49	56	57
South Central	69	57	59	58	51	53	53	54	56	58	55	57	61	64
Mountain	46	47	42	32	33	40	46	51	52	53	57	58	60	60
Pacific	57	56	53	51	54	58	60	61	61	62	62	61	64	65
Lower 48	62	56	51	51	51	54	55	51	50	52	49	52	57	60

°F below normal: ≤ -20, -19 to -15, -14 to -10, -9 to -5, -4 to -1, 0, 1 to 4, 5 to 9, 10 to 14, 15 to 19, ≥ 20

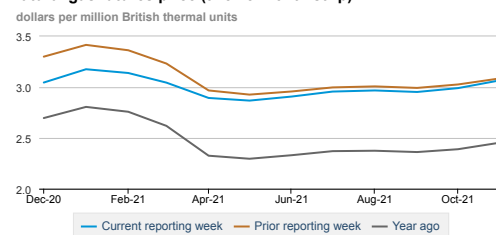
normal: 0

°F above normal: 1 to 4, 5 to 9, 10 to 14, 15 to 19, ≥ 20

### Daily Lower 48 net natural gas exports (includes pipeline gas and LNG feedstock/sendout changes)



### Natural gas futures price (twelve-month strip)



Have a question, comment, or suggestion? Send your feedback to [natgasstoragedashboard@eia.gov](mailto:natgasstoragedashboard@eia.gov)